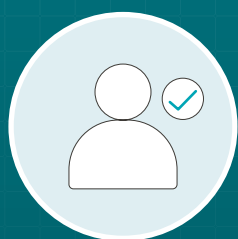




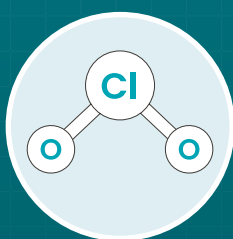
SPORICIDAL DISINFECTION WITH A LIGHT TOUCH

JET LUX is a sporicidal chlorine dioxide foam. Each pull of the trigger targets surfaces where microbes are a risk including; patient bed spaces, keyboards & screens and sinks & plugs.

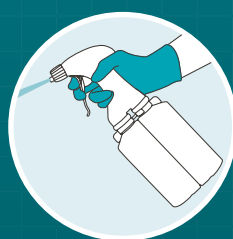
Exceptionally user-friendly, **JET LUX** is Tristel's lightest **JET** formula yet.



**USER
FRIENDLY**



**SPORICIDAL
DISINFECTION
POWERED BY
TRISTEL ClO₂**



**LOW
ODOUR
LIGHT
TOUCH**



**FAST
ACTING
EFFECTIVE IN
1 MINUTE**

TRISTEL CHLORINE DIOXIDE (ClO₂)

JET LUX is built upon the same chlorine dioxide (ClO₂) chemistry as the Tristel Medical Device Decontamination products. **JET LUX** incorporates two separate compartments that contain Base Solution (citric acid) and Activator Solution (sodium chlorite).

When mixed by pulling the **JET LUX** trigger, ClO₂ chemistry is generated.

JET LUX contains an amphoteric surfactant for added cleaning performance.

ClO₂ eliminates microorganisms by destroying their molecular structures.

This means that harmful microbes cannot build resistance to ClO₂.



SAY GOODBYE TO PRE-WETTED PLASTIC WIPES

Efficacy with the standard wipe used in EN 16615 means **JET LUX** can be paired with any dry wipe.

Use a microfibre cloth or a plastic free dry wipe to create sporicidal wipes.

PROVEN EFFECTIVE IN 1 MINUTE, AGAINST:

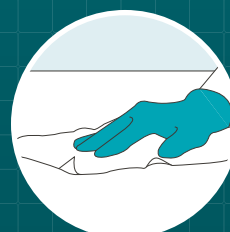
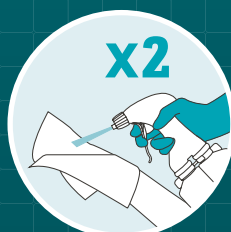
SPORICIDAL	EN 17126
MYCOBACTERICIDAL	EN 14348
VIRUCIDAL	EN 14476
YEASTICIDAL/FUNGICIDAL	EN 13624
	EN 16615
BACTERICIDAL	EN 13727
	EN 16615

<i>Clostridioides difficile</i>	<i>Enterococcus hirae</i>
<i>Bacillus subtilis</i>	<i>Staphylococcus aureus</i>
<i>Bacillus cereus</i>	Carbapenem-resistant Enterobacteriaceae (CRE) <i>Klebsiella pneumoniae</i>
Adenovirus Type 5	Extended Spectrum Beta-Lactamase <i>Klebsiella pneumoniae</i> (ESBL)
Murine Norovirus	Methicillin-resistant <i>Staphylococcus aureus</i> (MRSA)
Poliovirus Type 1	
Bovine Coronavirus	Multidrug-resistant <i>Acinetobacter baumannii</i> (MDRAB)
<i>Aspergillus brasiliensis</i>	
<i>Candida albicans</i>	Vancomycin-resistant Enterococci (VRE) <i>Enterococcus faecium</i>
<i>Candidozyma auris</i> (formerly <i>Candida auris</i>)	

EASY TO USE, APPLY, WIPE & WAIT

Each bottle of **JET LUX** delivers 570 doses of sporicidal chlorine dioxide foam.

Simply apply, wipe and wait!



Contact your local Sales Representative to learn how **JET LUX** can improve your infection control procedures.

cacheTM

Tristel Solutions Ltd

Unit 1b, Lynx Business Park, Fordham Road, Snailwell, Cambridgeshire, CB8 7NY, UK

T +44 (0) 1638 721500 - E mail@tristel.com - W www.tristel.com

Brought to you by TristelTM

Use biocides safely. Always read the label and product information before use.

Copyright © Tristel Solutions Limited
Mkt-Bro-2212 - 21/MAR/2025 - V2