

JET PRO^c

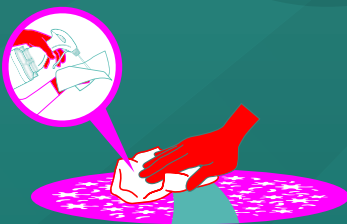


SPORICIDAL DISINFECTION THAT KEEPS ON PROTECTING

JET PRO is a sporicidal chlorine dioxide foam with an extra ingredient that enables the foam to kill bacteria and enveloped viruses for up to 8 hours after application.

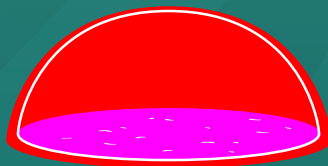
Disinfectants cannot be used every minute of every day. The combination of JET PRO's powerful chlorine dioxide chemistry with prolonged protection technology provides assurance for patients, staff and visitors, even after you have moved on to your next task.

PROLONGED PROTECTION FOR PATIENTS, STAFF & VISITORS



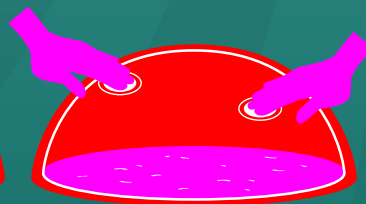
JET PRO is sporicidal in 1 minute.

WET KILL

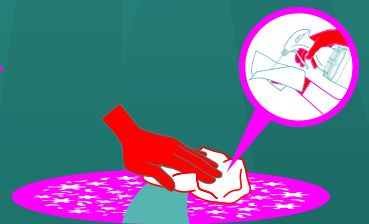


Once dry, JET PRO places an invisible barrier on the surface, protecting the surface for up to 8 hours.

DRY KILL



Touching the surface weakens the protective barrier, and regrowth of microorganisms will eventually occur.



JET PRO can then be re-applied to remove microorganisms and refresh the protective barrier.

WET KILL

TRISTEL (ClO₂) + PROLONGED PROTECTION TECHNOLOGY

JET PRO is built upon the same chlorine dioxide (ClO₂) chemistry as the Tristel Medical Device Decontamination products. **JET PRO** incorporates two separate compartments that contain Base Solution (citric acid) and Activator Solution (sodium chlorite).

When mixed by pulling the **JET PRO** trigger, ClO₂ chemistry is generated. **JET PRO** contains an amphoteric surfactant for added cleaning performance. ClO₂ eliminates microorganisms by destroying their molecular structures. This means that harmful microbes cannot build resistance to ClO₂. An extra ingredient enables the foam to kill bacteria and enveloped viruses for up to 8 hours after application.



ECO-FRIENDLY SPORICIDAL WIPES

Efficacy with the standard wipe used in EN 16615 means **JET PRO** can be paired with any dry wipe. Use a microfibre cloth or a biodegradable dry wipe to create sporicidal wipes. You can stop using pre-wetted plastic wipes.

PROVEN EFFECTIVE IN 1 MINUTE, AGAINST:

SPORICIDAL	EN 17126	
MYCOBACTERICIDAL	EN 14348	
VIRUCIDAL	EN 14476	PAS 2424*
	PAS 2424*	
YEASTICIDAL	EN 13624	EN 16615
FUNGICIDAL	EN 13624	
BACTERICIDAL	EN 13727	EN 16615
	PAS 2424	

DID YOU KNOW:

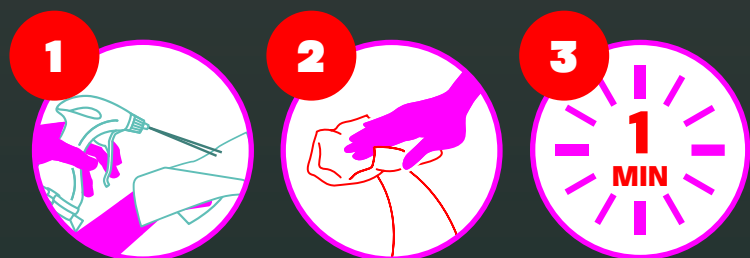
PAS 2424 is the only test method available to evaluate a disinfectant's long-lasting antimicrobial activity.

<i>Bacillus cereus</i>	<i>Enterococcus hirae</i>
<i>Bacillus subtilis</i>	<i>Escherichia coli</i>
<i>Clostridioides difficile</i>	<i>Pseudomonas aeruginosa</i>
Adenovirus Type 5	<i>Staphylococcus aureus</i>
Murine Norovirus	<i>Trichophyton interdigitale</i>
Poliovirus Type 1	Carbapenem-resistant Enterobacteriaceae (CRE)
SARS-CoV-2*	<i>Klebsiella pneumoniae</i>
Tuberculosis (TB) causing Mycobacteria	Methicillin-resistant <i>Staphylococcus aureus</i> (MRSA)
<i>Aspergillus brasiliensis</i>	Multidrug-resistant <i>Acinetobacter baumannii</i> (MDRAB)
<i>Candida albicans</i>	Vancomycin-resistant Enterococci (VRE)
<i>Candida auris</i>	<i>Enterococcus faecium</i>

EASY TO USE APPLY, WIPE & WAIT

Each bottle of **JET PRO** delivers 570 doses of sporicidal chlorine dioxide foam.

Simply apply, wipe and wait!



MEET OTHER MEMBERS OF THE JET FAMILY

A customer favourite, the original **JET**, is your medical device surface disinfectant partner. Use **JET** in patient bed spaces and on medical surfaces. Contact your local Sales Representative to find out more.

cache™

Sporicidal Surface
Disinfection

+44 (0) 1638 721500 - mail@tristel.com
www.thecachecollection.com

*Modified for virucidal efficacy against enveloped viruses. *A representative sample of Tristel chlorine dioxide chemistry has been tested in accordance with EN 14476:2013+A2:2019, at a concentration of 20 parts per million (ppm). JET PRO has a chlorine dioxide concentration greater than 20ppm at point of use. Use biocides safely. Always read the label and product information before use.

Copyright © Tristel Solutions
Mkt-Bro-1263-4
02/MAY/2023