

A TRIPLE-ENZYME CLEANING FOAM FOR SKIN SURFACE AND ENDOCAVITY ULTRASOUND PROBES

Disinfection is only effective when the probe has undergone thorough cleaning. Tristel Clean is a triple-enzyme cleaning foam designed specifically for endocavity and skin surface ultrasound probes.

When using Tristel Clean for cleaning and Tristel Duo ULT for high-level disinfection, no intermediate rinsing is required.



TRIPLE ENZYME
MEETS CLEANING STANDARDS



LONG LASTING
TWO-YEAR SHELF LIFE



COMPATIBLE
APPROVED BY MAJOR
MANUFACTURERS



PRACTICAL
NO SOAKING REQUIRED



MOBILE
LIGHT-WEIGHT & PRACTICAL



FOAM
NON-AEROSOL APPLICATION

UNRIVALLED COMPATIBILITY

The Tristel Clean formula has been used for over twenty years in the Tristel Pre-Clean Wipe. Tristel cleaning chemistry has been approved by most major ultrasound manufacturers for use on their devices.

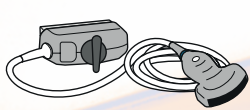
- Advanced Tactile Imaging
- Arthrex
- BD
- BK Medical
- Butterfly Network
- Canon Medical Systems
- Carestream
- Clarius Mobile Health
- DWL Compumedics
- Echosens
- Esaote
- Exact Imaging
- Fujifilm HEALTHCARE
- GE Healthcare
- Mcube
- Medcom
- Mindray
- Philips
- SiemensHealthineers
- Samsung Medical

Tristel
Clean

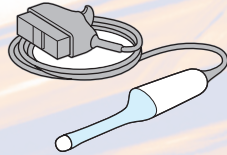
APPLICATIONS

Tristel Clean is designed specifically for the cleaning of skin surface and endocavity probes.

Two aliquots of foam will cover a surface area of 20cm x 50cm (0.1m²).



SKIN SURFACE PROBES



ENDOCAVITY PROBES

HIGH-LEVEL DISINFECTION WITH TRISTEL DUO ULT

As a partner product for Tristel Duo ULT and Duo Wipes, Tristel Clean is designed for use as part of a comprehensive ultrasound disinfection procedure.

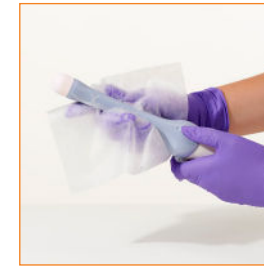
After removing soil and organic matter from the probe with Tristel Clean, Tristel Duo ULT can be used for high-level disinfection (HLD). No intermediate or posterior rinsing is required.

Tristel Duo ULT is chlorine dioxide in a foam, designed specifically for the high-level disinfection of endocavity and skin surface ultrasound probes. Tristel Duo offers speed, safety, efficacy and excellent material compatibility.



DISPENSE

Tristel Clean onto a dry wipe.



CLEAN

the device until soil and organic matter have been visibly removed. In case of heavy soiling repeat the process.



HIGH-LEVEL DISINFECT

the device with Tristel Duo ULT. Refer to the product's user guide for full instructions.

PRODUCT OPTIONS & ACCESSORIES

DUO WIPES
200 wipes per tub / 6 tubs per box

TRISTEL CLEAN
310 aliquots per bottle / 6 bottles per box

TRISTEL DUO ULT
310 aliquots per bottle / 6 bottles per box

DUO DOK
Duo DOK keeps Duo within reach

To download the latest resources, visit www.tristel.com/resources