

# Tristel Trio™

## Wipes System

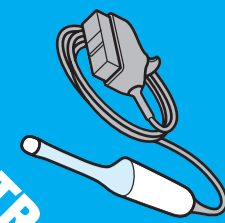
A complete solution for high-level disinfection of non-lumened invasive medical devices.

 Refer to the User Guide for full instructions.


### Notes:

- This wall chart should be used in conjunction with the instructions for use (IFU), product label, Safety Data Sheet (SDS) and device manufacturer's instructions.
- Always follow hospital protocols and device manufacturers' instructions.
- Disinfect hands and wear gloves when handling disinfectants and medical devices. Wear appropriate Personal Protective Equipment (PPE).
- An initial pre-clean should be performed immediately after medical device use as per hospital protocol.
- Take care not to rub or bend the instrument and pay particular attention to edges, ridges, indentations and areas where different materials connect.
- Prepare for the decontamination procedure by taking one of each Wipe and the Activator Foam from the box.
- Do not use past the expiry date. For the expiry date and LOT number please see the surface of the carton.
- Do not use if the Wipe sachet is damaged, or the Wipe is discoloured, damaged or dry.
- Remove the sheath/condom and ultrasound gel from the probe with a paper towel and discard to clinical waste.
- Use more Pre-Clean Wipes if required to ensure the instrument is visibly clean.
- Keep the Wipe sachets to complete the Tristel Quality Audit Trail Record Book at the end of the decontamination procedure.
- Discard the Wipes and gloves in accordance with hospital guidelines.
- For professional use only.

FOR ULTRASOUND  
ENDOCAVITY PROBE  
MACHINE REPROCESSING



STEP 1  
CLEANING



Remove the Pre-Clean Wipe from its sachet and unfold it in the palm of your hand.

Wipe the probe holder, plug, cord, probe handle and probe shaft; ensuring all areas come into contact with the Wipe.

Discard the used Wipe and gloves in accordance with local regulations. Disinfect your hands and put on new gloves.

STEP 2a + 2b  
ACTIVATING




Remove the Sporicidal Wipe from its sachet and unfold it in the palm of your hand.

Take the Activator Foam bottle and apply two doses of foam onto the Sporicidal Wipe.

Fold the Sporicidal Wipe in on itself and scrunch together **15 seconds** to generate chlorine dioxide.

Ensure that the Wipe is completely covered in Foam. Use the activated Wipe immediately.

STEP 2 CONTINUED  
HIGH-LEVEL DISINFECTING




Wipe the probe holder, plug, cord, probe handle and probe shaft; ensuring all areas come into contact with the Wipe.

If required, use a cotton swab to spread the foam into indentations.

Discard the used Wipe and gloves in accordance with local regulations. Disinfect your hands and put on new gloves.

Observe a minimum contact time of **30 seconds**.

STEP 3  
RINSING



Remove the Rinse Wipe from its sachet and unfold it in the palm of your hand.

Wipe the probe holder, plug, cord, probe handle and probe shaft; ensuring all areas come into contact with the Wipe.

Discard the used Wipe, apron and gloves in accordance with local regulations. Disinfect your hands.

STEP 4: TRACEABILITY



The Tristel Trio Wipes System can include either paper-based or digital traceability.

- The Tristel Quality Audit Trail Record Book can be used to manually document the Tristel Trio Wipes System decontamination procedure.
- Tristel 3T is a digital traceability system comprising an online Portal for data management and reporting, and an App to record Tristel Trio Wipes System decontamination procedures. The 3T App features optional training videos for increased compliance.

Both traceability systems include guidance on how to complete the record process correctly.