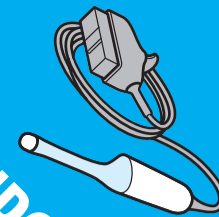


Tristel Trio™

Wipes System

A complete solution for high-level disinfection of non-lumened invasive medical devices.

FOR ENDOCAVITY
ULTRASOUND PROBES



Refer to the User Guide for full instructions.

Notes:

- Always follow hospital protocols and device manufacturers' instructions.
- Disinfect hands and wear appropriate PPE when handling disinfectants and medical devices.
- An initial pre-clean should be performed immediately after medical device use as per hospital protocol.
- Take care not to rub or bend the instrument and pay particular attention to edges, ridges and indentations.
- Prepare for the decontamination procedure by taking one of each Wipe and the Activator Foam from the box.
- Do not use if packaging is damaged and/or if Wipes are dry.
- Remove the sheath/condom and ultrasound gel from the probe with a paper towel and discard to clinical waste.
- Use more Wipes if required to ensure the instrument is visibly clean.
- Keep the Wipe sachets to complete the Tristel Traceability book at the end of the decontamination procedure.
- Discard the Wipes and gloves in accordance with hospital guidelines.
- For professional use only.

STEP 1: CLEANING



Remove the Pre-Clean Wipe from its sachet and unfold it in the palm of your hand.

Wipe the probe to remove all visible soil.

Discard the used Wipe and gloves to clinical waste.

Disinfect your hands and put on new gloves.

STEP 2a + 2b: ACTIVATING



Remove the Sporicidal Wipe from its sachet and unfold it in the palm of your hand.

Take the Activator Foam bottle and apply two doses of foam onto the Sporicidal Wipe.

Fold the Sporicidal Wipe in on itself and scrunch it during **15 seconds** to generate chlorine dioxide.

Ensure that the Wipe is completely covered in Foam.

STEP 2: HIGH-LEVEL DISINFECTING



Wipe the surface of the probe in one movement to cover it with foam, ensuring all areas come into contact with the Wipe.

If required, use a cotton swab to spread the foam into indentations.

Discard the used Wipe to clinical waste.

Observe a minimum contact time of **30 seconds**.

STEP 3: RINSING



Remove the Rinse Wipe from its sachet and unfold it in the palm of your hand.

Wipe the probe to remove excess foam.

Discard the used Wipe to clinical waste.

STEP 4: TRACEABILITY



Refer to the used Wipe sachets and Activator Foam bottle to complete the Tristel Quality Audit Trail Record Book.