

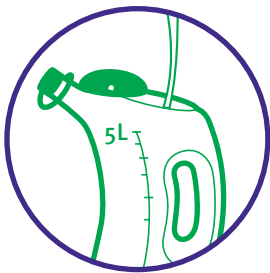


## High-level disinfecting & sporicidal solution for preventing outbreaks and ward closures.

Tristel Fuse for Surfaces combines the powerful biocidal efficacy of chlorine dioxide with cleaning action. Designed specifically for use on large surface areas such as floors and walls.

Effective against a wide range of microorganisms, including SARS-CoV-2\*, the virus which causes COVID-19, and multi-drug resistant pathogens, in **five minutes**.

### EFFECTIVE AGAINST SARS-CoV-2

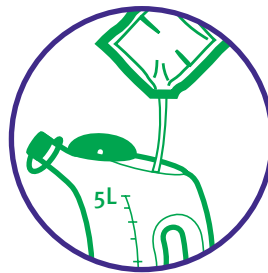


POUR FIVE LITRES OF AMBIENT WATER INTO A CONTAINER.

*NOTE: DO NOT USE HOT WATER.*



TAKE ONE SACHET AND FOLD IT IN HALF. SQUEEZE ONE SIDE TO BURST CONTENTS THROUGH THE CENTRE SEAL. CONTENTS WILL START TO TURN YELLOW.



TEAR OR CUT THE SACHET CORNER AND POUR CONTENTS INTO FIVE LITRES OF WATER. TRISTEL FUSE IS NOW READY TO USE.



APPLY TRISTEL FUSE WITH A MOP FOR FLOORS AND WALLS AND WITH A CLOTH FOR DAMP DUSTING. OBSERVE A CONTACT TIME OF **FIVE MINUTES**.

**Tristel** Fuse<sup>TM</sup>  
for Surfaces

Classified as biocide under the EU Biocides Regulation. Use biocides safely. Always read the label and product information before use.

# WHY CHOOSE TRISTEL FUSE FOR SURFACES?

Tristel Fuse combines the powerful biocidal efficacy of chlorine dioxide with cleaning action. It is designed specifically for use on most floors, walls, mattresses and stainless steel surfaces.

Tristel Fuse is delivered in a unique dual-compartment burstable sachet containing Tristel Base and Activator solutions. When mixed upon bursting the sachet, Tristel's proprietary chlorine dioxide chemistry is generated.

Each sachet produces five litres of working solution at **one concentration**, with one contact time to destroy a wide range of microorganisms. Tristel Fuse achieves high-level disinfection, including sporicidal efficacy, in **five minutes**.

Training and certification are an essential part of Tristel's customer service. Our Online Training Portal provides Tristel Fuse for Surfaces user training at a time and place convenient to you.

## Effective against microorganisms of concern such as:

- *Bacillus subtilis*
- *Bacillus cereus*
- Mycobacteria causing Tuberculosis (TB)
- SARS-CoV-2
- Blood-borne viruses (such as Hepatitis B virus (HBV) and Human Immunodeficiency Virus (HIV))\*\*
- Poliovirus
- Adenovirus
- Norovirus
- *Candida albicans*
- *Candida auris*
- *Escherichia coli*
- *Pseudomonas aeruginosa*
- *Enterococcus hirae*
- *Staphylococcus aureus* (including Methicillin-resistant *Staphylococcus aureus* (MRSA))
- Carbapenemase-resistant Enterobacteriaceae (CRE)
- *Klebsiella pneumoniae*
- Vancomycin-resistant Enterococci (VRE) *Enterococcus faecium*
- Multi-drug resistant *Acinetobacter baumannii* (MDRAB)

<b>SPORES</b>	EN 13704
<b>MYCOBACTERIA</b>	EN 14348
<b>VIRUS</b>	EN 14476
<b>YEASTS/FUNGI</b>	EN 13624
	EN 14562
<b>BACTERIA</b>	EN 13727
	EN 14561
	EN 16615

## Chlorine dioxide

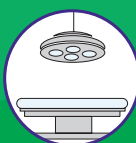
Tristel Fuse utilises Tristel's proprietary chlorine dioxide chemistry (ClO<sub>2</sub>), a well-documented and highly effective biocide. ClO<sub>2</sub> is a strong oxidant whose germicidal characteristics are well known. It can oxidise lipids and proteins present in bacterial and fungal cell membranes, leading to a loss in membrane integrity and ultimately cell death. ClO<sub>2</sub> can also penetrate cells and degrade nucleic acids via an oxidative pathway.

Similar mechanisms are responsible for the ability of ClO<sub>2</sub> to inactivate viral particles. ClO<sub>2</sub> is proven effective in preventing biofilm build-up and in removing it from surfaces. Tristel Fuse is superior to surface cleaners and disinfectants based on bleach, chlorine tablets, quaternary ammonium compounds, phenols and aldehydes.

## APPLICATIONS

Tristel Fuse is designed specifically for the cleaning and high-level disinfection of large hard non-porous surfaces in critical areas, such as:

- Operating Theatres
- Oncology Units
- Burn Units
- Intensive Care Units
- General Wards
- Laboratories
- Care Environment
- Accident & Emergency
- Emergency Vehicles



## TRISTEL FUSE FOR SURFACES



- 40 sachets/box
- Order code: **TSLo10201**
- Classified as biocide under the EU Biocides Regulation. Use biocides safely. Always read the label and product information before use.