

# A TRIPLE-ENZYME CLEANING FOAM FOR SKIN SURFACE AND ENDOCAVITY ULTRASOUND PROBES

Disinfection is only effective when the probe has undergone thorough cleaning. Tristel Clean is a triple-enzyme cleaning foam designed specifically for endocavity and skin surface ultrasound probes.

When using Tristel Clean for cleaning and Tristel Duo ULT for high-level disinfection, no intermediate rinsing is required.



**TRIPLE ENZYME**  
MEETS CLEANING STANDARDS



**LONG LASTING**  
TWO-YEAR SHELF LIFE



**COMPATIBLE**  
APPROVED BY MAJOR  
MANUFACTURERS



**PRACTICAL**  
NO SOAKING REQUIRED



**MOBILE**  
LIGHT-WEIGHT & PRACTICAL



**FOAM**  
NON-AEROSOL APPLICATION

## UNRIVALLED COMPATIBILITY

The Tristel Clean formula has been used for over twenty years in the Tristel Pre-Clean Wipe. Tristel cleaning chemistry has been approved by most major ultrasound manufacturers for use on their devices.

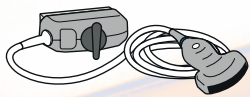
- Advanced Tactile Imaging
- Arthrex
- BD
- BK Medical
- Butterfly Network
- Canon Medical Systems
- Carestream
- Clarius Mobile Health
- DWL Compumedics
- Echosens
- Esaote
- Exact Imaging
- Fujifilm HEALTHCARE
- GE Healthcare
- Mcube
- Medcom
- Mindray
- Philips
- SiemensHealthineers
- Samsung Medical

**Tristel**  
**Clean**

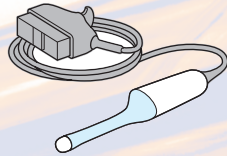
## APPLICATIONS

Tristel Clean is designed specifically for the cleaning of skin surface and endocavity probes.

Two aliquots of foam will cover a surface area of 20cm x 50cm (0.1m<sup>2</sup>).



SKIN SURFACE PROBES



ENDOCAVITY PROBES

## HIGH-LEVEL DISINFECTION WITH TRISTEL DUO ULT

As a partner product for Tristel Duo ULT and Duo Wipes, Tristel Clean is designed for use as part of a comprehensive ultrasound disinfection procedure.

After removing soil and organic matter from the probe with Tristel Clean, Tristel Duo ULT can be used for high-level disinfection (HLD). No intermediate or posterior rinsing is required.

Tristel Duo ULT is chlorine dioxide in a foam, designed specifically for the high-level disinfection of endocavity and skin surface ultrasound probes. Tristel Duo offers speed, safety, efficacy and excellent material compatibility.



### DISPENSE

Tristel Clean onto a dry wipe.



### CLEAN

the device until soil and organic matter have been visibly removed. In case of heavy soiling repeat the process.



### HIGH-LEVEL DISINFECT

the device with Tristel Duo ULT. Refer to the product's user guide for full instructions.

## PRODUCT OPTIONS & ACCESSORIES

**DUO WIPES**  
200 wipes per tub / 6 tubs per box

**TRISTEL CLEAN**  
310 aliquots per bottle / 6 bottles per box

**TRISTEL DUO ULT**  
310 aliquots per bottle / 6 bottles per box

**DUO DOK**  
Duo DOK keeps Duo within reach

To download the latest resources, visit [www.tristel.com/resources](http://www.tristel.com/resources)