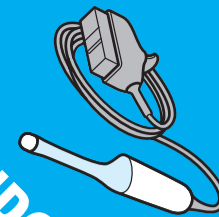


Tristel Trio™ Wipes System

A complete solution for high-level disinfection of non-lumened invasive medical devices.

FOR ENDOCAVITY
ULTRASOUND PROBES



Refer to the User Guide for full instructions.

Notes:

- Always follow hospital protocols and device manufacturers' instructions.
- Disinfect hands and wear appropriate PPE when handling disinfectants and medical devices.
- An initial pre-clean should be performed immediately after medical device use as per hospital protocol.
- Take care not to rub or bend the instrument and pay particular attention to edges, ridges, indentations and areas where different materials connect.
- Prepare for the decontamination process by taking one of each Wipe and the Activator Foam from the box.
- Do not use past the expiry date. For the expiry date and LOT number please see the surface of the carton.
- Do not use if the Wipe sachet is damaged, or the Wipe is discoloured, damaged or dry.
- Remove the sheath/condom and ultrasound gel from the probe with a paper towel and discard to clinical waste.
- Use more Wipes if required to ensure the instrument is visibly clean.
- Keep the Wipe sachets to complete the Tristel Traceability book at the end of the decontamination procedure.
- Discard the used Wipe and gloves in accordance with local regulations.
- For professional use only.

STEP 1: CLEANING



Remove the Pre-Clean Wipe from its sachet and unfold it in the palm of your hand.

Wipe the probe to remove all visible soil.

Discard the used Wipe and gloves in accordance with local regulations.

Disinfect your hands and put on new gloves.

STEP 2a + 2b: ACTIVATING



Remove the Sporidical Wipe from its sachet and unfold it in the palm of your hand.

Take the Activator Foam bottle and apply two doses of foam onto the Sporidical Wipe.

Fold the Sporidical Wipe in on itself and scrunch together **15 seconds** to generate chlorine dioxide.

Ensure that the Wipe is completely covered in Foam.

Use the activated Wipe immediately.

STEP 2: HIGH-LEVEL DISINFECTING



Wipe the surface of the probe in one movement to cover it with foam, ensuring all areas come into contact with the Wipe.

If required, use a cotton swab to spread the foam into indentations.

Discard the used Wipe in accordance with local regulations.

Observe a minimum contact time of **30 seconds**.

STEP 3: RINSING

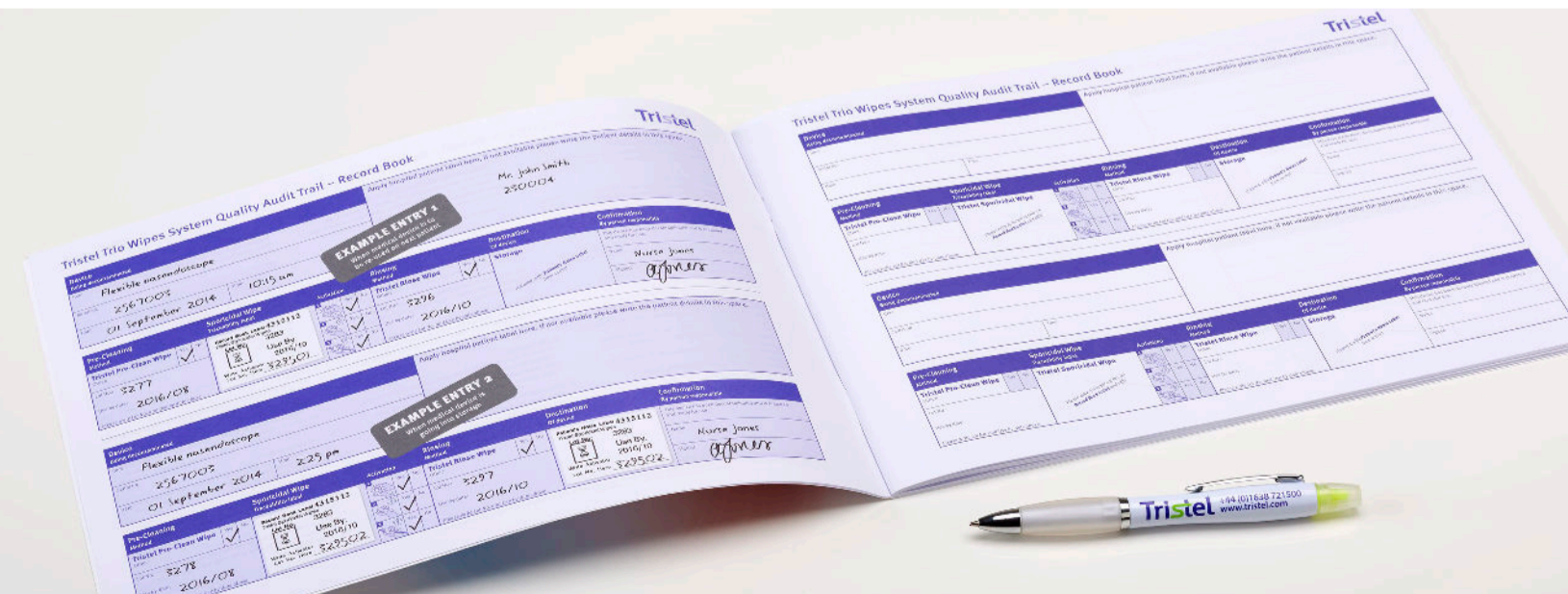


Remove the Rinse Wipe from its sachet and unfold it in the palm of your hand.

Wipe the probe to remove excess foam.

Discard the used Wipe in accordance with local regulations.

STEP 4: TRACEABILITY



Refer to the used Wipe sachets and Activator Foam bottle to complete the Tristel Quality Audit Trail Record Book.

Tristel™

Created by: Tristel Solutions Limited, Lynx Business Park, Cambs, UK, CB8 7NY
T +44 (0) 1638 721500 - E mail@tristel.com - W www.tristel.com

Hong Kong & Taiwan: Tristel Asia Limited, 21st Floor, 168 Electric Road, Fortress Hill, Hong Kong
T +852 2895 6968 - F +852 2869 4388 - E customerservicehk@tristel.com
For Tristel patent information please visit: <http://www.our-patents.info/tristel>

Australian sponsor: Tristel Pty Ltd, 40/328 Reserve Road, Cheltenham, VIC 3192
T 1300 680 898 - F +61 (0) 3 9533 6193 - E mail-au@tristel.com

New Zealand: Tristel New Zealand Limited, 23 Birch Avenue, Judea, Tauranga
T +64 (0) 7 5771560 - F +64 (0) 7 5771567 - E mail-nz@tristel.com

Malaysia: Tristel Malaysia Sdn. Bhd, A-25-3A Pinnacle PJ, Lorong Utara C, 46200 Petaling Jaya, Selangor Darul Ehsan, Malaysia
T +603 79317791 - F +603 79319971 - E mail-my@tristel.com

Singapore: Tristel Pte Ltd, 2 Venture Drive, Vision Exchange #14-04, Singapore 608526
T +65 6518 9918 - E mail-sg@tristel.com