

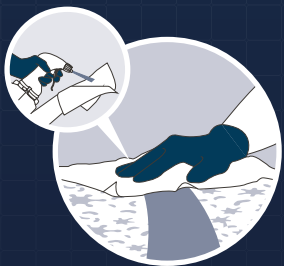


# SPORICIDAL DISINFECTION THAT KEEPS ON PROTECTING

**JET PRO** is a sporicidal chlorine dioxide foam with an extra ingredient that enables the foam to effectively eliminate bacteria and enveloped viruses for up to 8 hours after application.

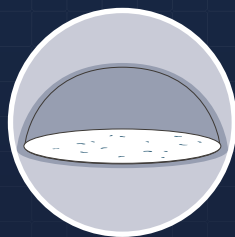
Disinfectants cannot be used every minute of every day. The combination of **JET PRO's** powerful chlorine dioxide chemistry with prolonged protection technology provides assurance for patients, staff and visitors, even after you have moved on to your next task.\*

\*Refer to user instructions before use. Not to be used on invasive devices.



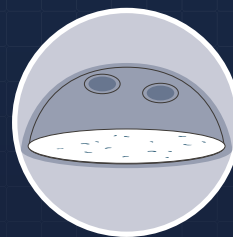
**JET PRO** is sporicidal in 1 minute.

**WET KILL**

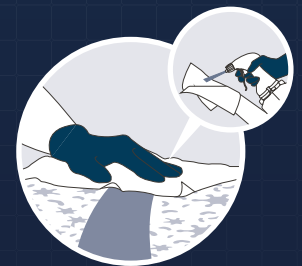


Once dry, **JET PRO** places an invisible barrier on the surface, protecting the surface for up to 8 hours.

**DRY KILL**



Touching the surface weakens the protective barrier, and regrowth of microorganisms will eventually occur.



**JET PRO** can then be re-applied to remove microorganisms and refresh the protective barrier.

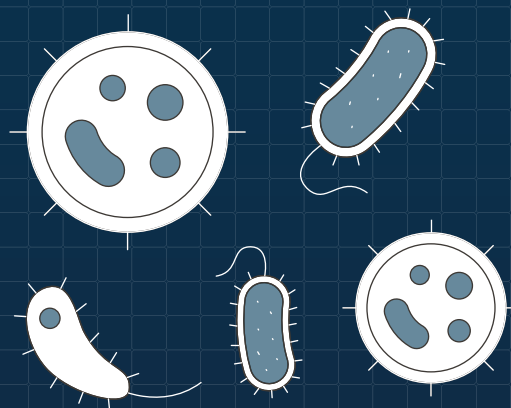
**WET KILL**

# WHY CHOOSE A SPORICIDAL SURFACE DISINFECTANT?

Hospital side rooms, isolation areas and high-dependency units have numerous high-touch surfaces.

Pathogens such as *Clostridioides difficile*, *Staphylococcus aureus* (including MRSA), *Candidozyma auris* (formerly *Candida auris*), and *Pseudomonas aeruginosa* can survive for days or even weeks, increasing the risk of transmission to patients and staff.<sup>1,2</sup>

Sporicidal surface disinfection is key to proactive outbreak prevention, especially against multi-resistant organisms like *C. difficile*.



## RISK AREAS

### POTENTIAL INFECTION RISK AREAS

Areas that can pose a risk of infection to patients:

- General wards
- Outpatient clinics
- Radiology departments
- Physical therapy units
- Sanitary facilities
- Dialysis centres
- Delivery rooms
- Functional diagnostic areas
- Psychiatric wards
- Interventional suites
- Emergency departments
- Patient transport vehicles

### SIGNIFICANT INFECTION RISK AREAS

Specialised zones designated for managing highly infectious diseases:

- Isolation rooms for conditions like tuberculosis (TB)

### INCREASED INFECTION RISK AREAS

Areas involve patients who are vulnerable to infections, which makes the risk significantly higher:

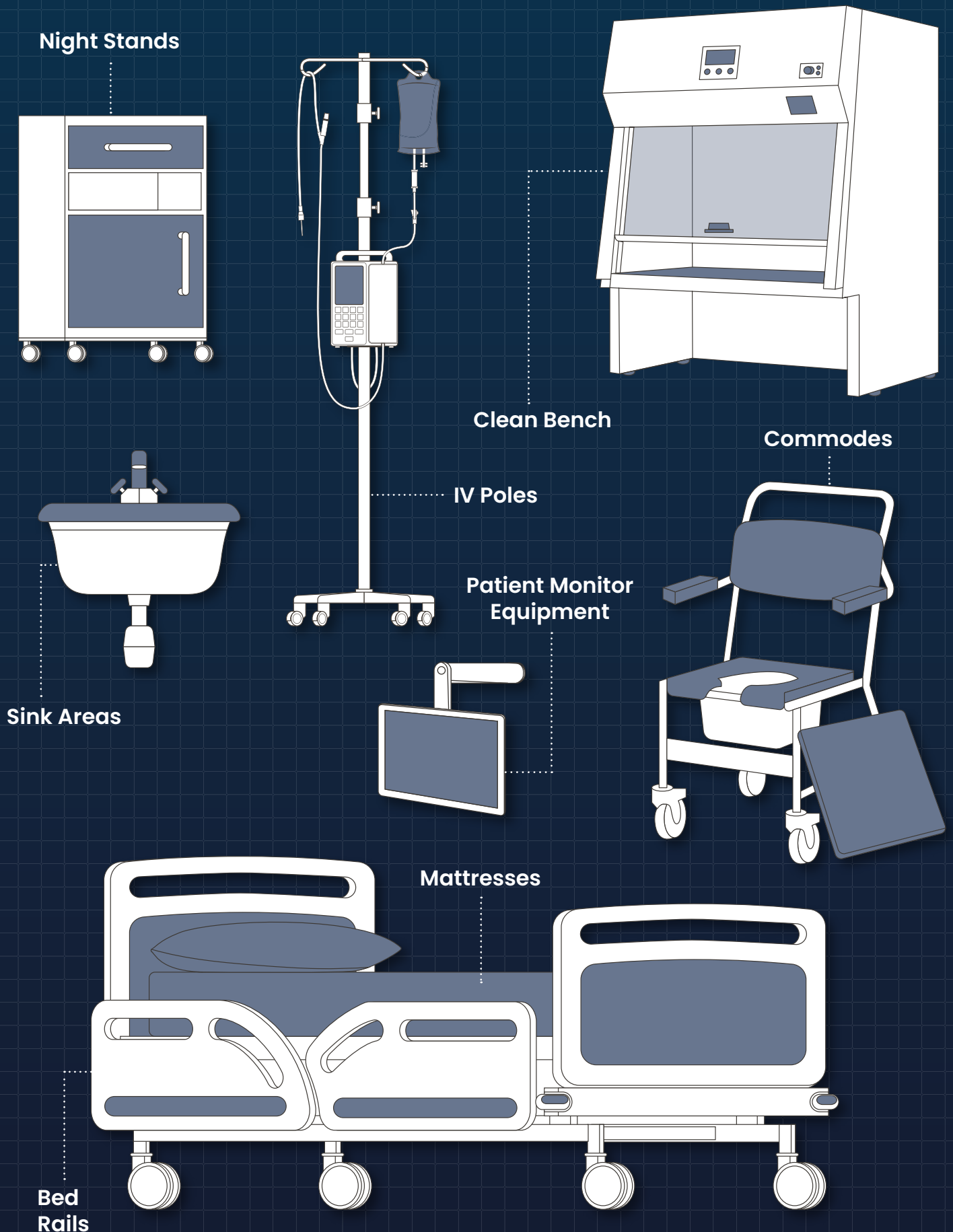
- Operating theatres
- Intensive and intermediate care units
- Transplantation units
- Burn treatment centres
- Oncology departments
- Neonatal intensive care units (NICUs)

### STAFF INFECTION RISK AREAS

These environments pose a greater infection risk to healthcare staff due to the nature of the work:

- Pathology/Microbiology laboratories
- Central Sterile Services Department (CSSD)

# TOUCH POINTS WITHIN A HEALTHCARE FACILITY THAT REQUIRE FREQUENT CLEANING AND DISINFECTION:



# TRISTEL CHLORINE DIOXIDE (ClO<sub>2</sub>) + PROLONGED PROTECTION TECHNOLOGY

**JET PRO** is built upon the same chlorine dioxide (ClO<sub>2</sub>) chemistry as the Tristel Medical Device Decontamination products. **JET PRO** incorporates two separate compartments that contain Base Solution (citric acid) and Activator Solution (sodium chlorite).

When mixed by pulling the **JET PRO** trigger, ClO<sub>2</sub> chemistry is generated. **JET PRO** contains an amphoteric surfactant for added cleaning performance. ClO<sub>2</sub> eliminates microorganisms by destroying their molecular structures. This means that harmful microbes cannot build resistance to ClO<sub>2</sub>. An extra ingredient enables the foam to effectively eliminate bacteria and enveloped viruses for up to 8 hours after application.



## SAY GOODBYE TO PRE-WETTED PLASTIC WIPES

Efficacy with the standard wipe used in EN 16615 means **JET PRO** can be paired with any dry wipe. Use a microfibre cloth or a plastic free dry wipe to create sporicidal wipes.

## PROVEN EFFECTIVE IN 1 MINUTE, AGAINST:

<b>SPORICIDAL</b>	EN 17126	EN 17846
<b>MYCOBACTERICIDAL</b>	EN 14348	
<b>VIRUCIDAL</b>	EN 14476	PAS 2424*
<b>YEASTICIDAL/ FUNGICIDAL</b>	EN 13624	
	EN 16615	
<b>BACTERICIDAL</b>	EN 13727	EN 16615
	PAS 2424	

<i>Clostridioides difficile</i>	<i>Enterococcus hirae</i>
<i>Bacillus subtilis</i>	<i>Proteus vulgaris</i>
<i>Bacillus cereus</i>	<i>Pseudomonas aeruginosa</i>
Adenovirus Type 5	<i>Streptococcus pyogenes</i>
Poliovirus Type 1	Carbapenem-resistant Enterobacteriaceae (CRE)
Murine Norovirus	<i>Klebsiella pneumoniae</i>
Bovine Coronavirus	Extended Spectrum Beta-Lactamase <i>Klebsiella</i>
<i>Aspergillus brasiliensis</i>	Murine Norovirus pneumoniae (ESBL)
<i>Candida albicans</i>	Methicillin-resistant <i>Staphylococcus aureus</i> (MRSA)
<i>Candidozyma auris</i> (formerly <i>Candida auris</i> )	Multidrug-resistant <i>Acinetobacter baumannii</i> (MDRAB)
<i>Trichophyton interdigitale</i>	Vancomycin-resistant Enterococci (VRE) <i>Enterococcus faecium</i>

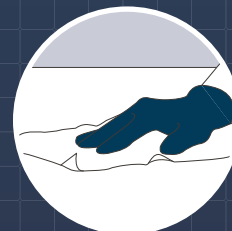
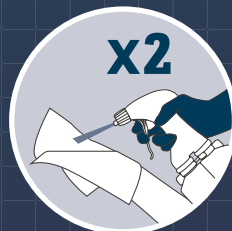
### DID YOU KNOW?

PAS 2424 is the only test method available to evaluate a disinfectant's long-last antimicrobial activity.

## EASY TO USE, APPLY, WIPE & WAIT

Each bottle of **JET PRO** delivers 570 doses of sporicidal chlorine dioxide foam.

**Simply apply, wipe and wait!**



**Hong Kong:**  
Tristel Asia Limited  
T +852 2895 6968  
E customerservicehk@tristel.com

W [www.tristel.com/asia-en](http://www.tristel.com/asia-en)

**Singapore:**  
Tristel Pte Ltd  
T +65 6518 9918  
E mail-sg@tristel.com

Use biocides safely. Always read the label and product information before use.

Join us on LinkedIn

