



SPORICIDAL DISINFECTION WITH A LIGHT TOUCH

JET LUX is a sporicidal chlorine dioxide foam. Each pull of the trigger targets surfaces where microbes are a risk including; patient bed spaces, keyboards & screens and sinks & plugs.*

Exceptionally user-friendly, **JET LUX** is Tristel's lightest **JET** formula yet.

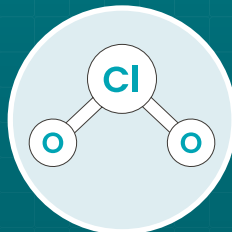
*Refer to user instructions before use. Not to be used on invasive devices.



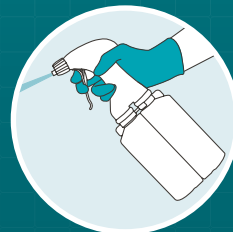
**MADE IN
THE UK**



**EFFECTIVE
AGAINST
BIOFILMS**



**SPORICIDAL
DISINFECTION
POWERED BY
TRISTEL ClO₂**



**LOW
ODOUR
LIGHT
TOUCH**



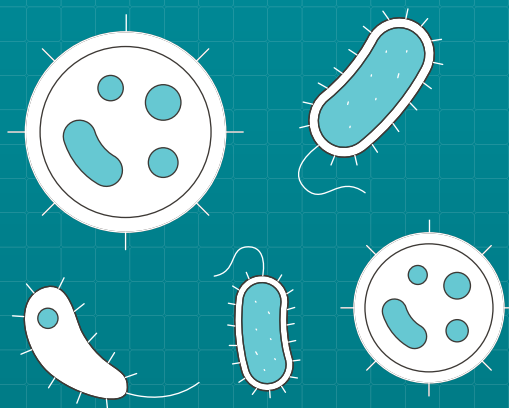
**FAST
ACTING
EFFECTIVE IN
1 MINUTE**

WHY CHOOSE A SPORICIDAL SURFACE DISINFECTANT?

Hospital side rooms, isolation areas and high-dependency units have numerous high-touch surfaces.

Pathogens such as *Clostridioides difficile*, *Staphylococcus aureus* (including MRSA), *Candidozyma auris* (formerly *Candida auris*), and *Pseudomonas aeruginosa* can survive for days or even weeks, increasing the risk of transmission to patients and staff.^{1,2}

Sporicidal surface disinfection is key to proactive outbreak prevention, especially against multi-resistant organisms like *C. difficile*.



RISK AREAS

POTENTIAL INFECTION RISK AREAS

Areas that can pose a risk of infection to patients:

- General wards
- Outpatient clinics
- Radiology departments
- Physical therapy units
- Sanitary facilities
- Dialysis centres
- Delivery rooms
- Functional diagnostic areas
- Psychiatric wards
- Interventional suites
- Emergency departments
- Patient transport vehicles

SIGNIFICANT INFECTION RISK AREAS

Specialised zones designated for managing highly infectious diseases:

- Isolation rooms for conditions like tuberculosis (TB)

INCREASED INFECTION RISK AREAS

Areas involve patients who are vulnerable to infections, which makes the risk significantly higher:

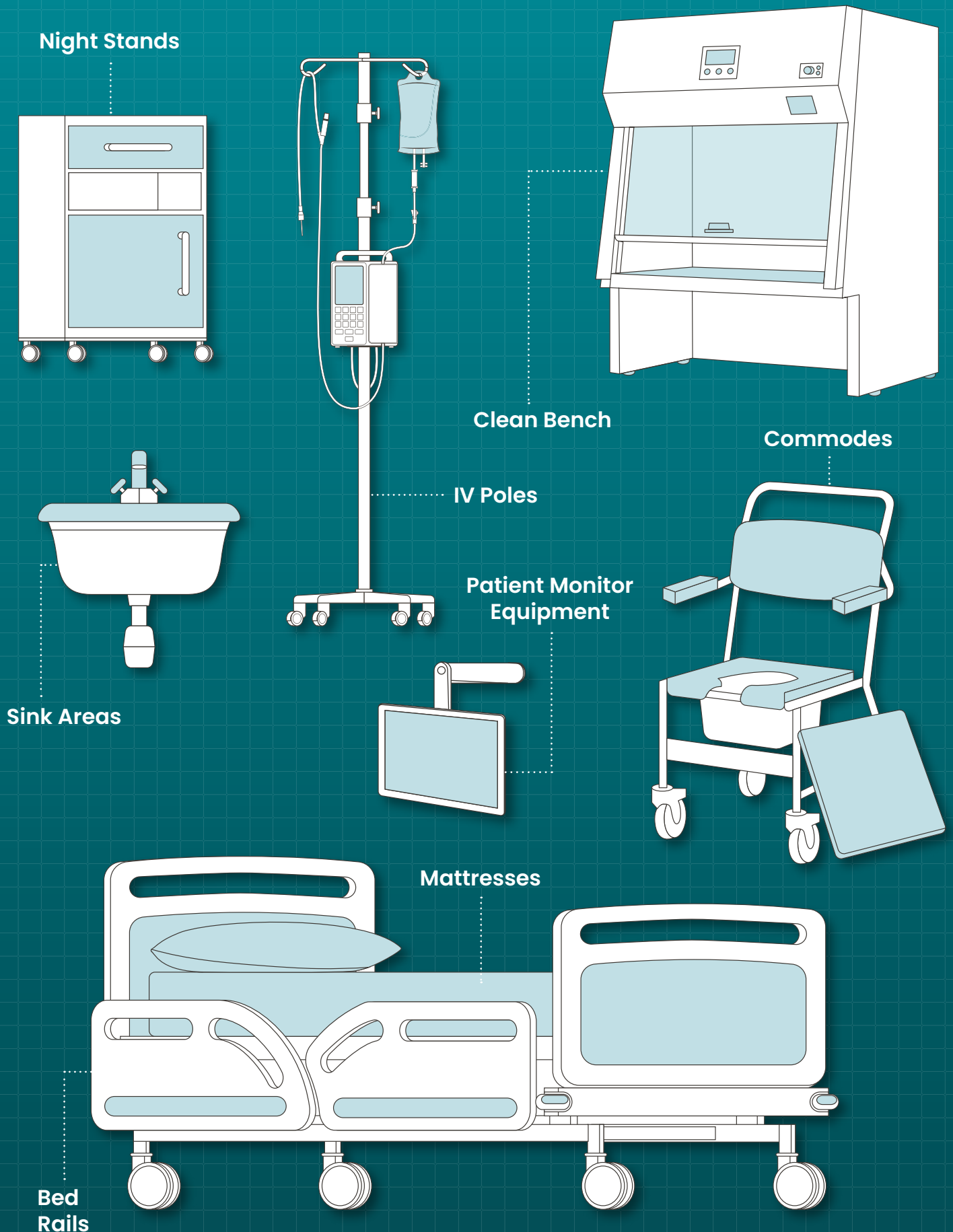
- Operating theatres
- Intensive and intermediate care units
- Transplantation units
- Burn treatment centres
- Oncology departments
- Neonatal intensive care units (NICUs)

STAFF INFECTION RISK AREAS

These environments pose a greater infection risk to healthcare staff due to the nature of the work:

- Pathology/Microbiology laboratories
- Central Sterile Services Department (CSSD)

TOUCH POINTS WITHIN A HEALTHCARE FACILITY THAT REQUIRE FREQUENT CLEANING AND DISINFECTION:



TRISTEL CHLORINE DIOXIDE (ClO₂)

JET LUX is built upon the same chlorine dioxide (ClO₂) chemistry as the Tristel Medical Device Decontamination products. **JET LUX** incorporates two separate compartments that contain Base Solution (citric acid) and Activator Solution (sodium chlorite).

When mixed by pulling the **JET LUX** trigger, ClO₂ chemistry is generated.

JET LUX contains an amphoteric surfactant for added cleaning performance.

ClO₂ eliminates microorganisms by destroying their molecular structures.

This means that harmful microbes cannot build resistance to ClO₂.



SAY GOODBYE TO PRE-WETTED PLASTIC WIPES

Efficacy with the standard wipe used in EN 16615 means **JET LUX** can be paired with any dry wipe.

Use a microfibre cloth or a plastic free dry wipe to create sporicidal wipes.

PROVEN EFFECTIVE IN 1 MINUTE, AGAINST:

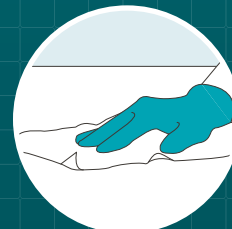
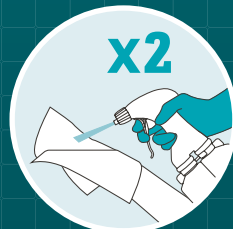
SPORICIDAL	EN 17126
	EN 17846
MYCOBACTERICIDAL	EN 14348
VIROCIDAL	EN 14476
YEASTICIDAL/FUNGICIDAL	EN 13624
	EN 16615
BACTERICIDAL	EN 13727
	EN 16615

<i>Clostridioides difficile</i>	<i>Enterococcus hirae</i>
<i>Bacillus subtilis</i>	<i>Staphylococcus aureus</i>
<i>Bacillus cereus</i>	Carbapenem-resistant Enterobacteriaceae (CRE) <i>Klebsiella pneumoniae</i>
Adenovirus Type 5	Extended Spectrum Beta-Lactamase <i>Klebsiella pneumoniae</i> (ESBL)
Murine Norovirus	Methicillin-resistant <i>Staphylococcus aureus</i> (MRSA)
Poliovirus Type 1	Multidrug-resistant <i>Acinetobacter baumannii</i> (MDRAB)
Bovine Coronavirus	
<i>Aspergillus brasiliensis</i>	Vancomycin-resistant Enterococci (VRE) <i>Enterococcus faecium</i>
<i>Candida albicans</i>	
<i>Candidozyma auris</i> (formerly <i>Candida auris</i>)	

EASY TO USE, APPLY, WIPE & WAIT

Each bottle of **JET LUX** delivers 570 doses of sporicidal chlorine dioxide foam.

Simply apply, wipe and wait!



Tristel
Surfaces™

Singapore:
Tristel Pte Ltd
T +65 6518 9918 E mail-sg@tristel.com W www.tristel.com/asia-en

Join us on
LinkedIn



Use biocides safely. Always read the label and product information before use.

Copyright ©
Tristel Solutions Limited
MKT-Bro-3339 - V2
22/MAY/2026