

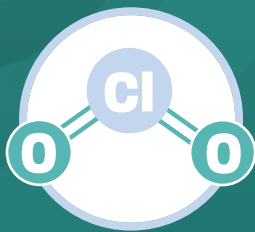
JET LUX

SPORICIDAL DISINFECTION WITH A LIGHT TOUCH

JET LUX is a sporicidal chlorine dioxide foam. Each pull of the trigger targets surfaces where microbes are a risk. Exceptionally user-friendly, JET LUX is Tristel's lightest JET formula yet.



**USER
FRIENDLY**
NO CHEMICAL
HAZARDS



**SPORICIDAL
DISINFECTION**
POWERED BY
TRISTEL ClO_2



**LOW
ODOUR**
LIGHT
TOUCH



**FAST
ACTING**
EFFECTIVE IN
1 MINUTE

TRISTEL CHLORINE DIOXIDE (ClO₂)

JET LUX is built upon the same chlorine dioxide (ClO₂) chemistry as the Tristel Medical Device Decontamination products. **JET LUX** incorporates two separate compartments that contain Base Solution (citric acid) and Activator Solution (sodium chlorite).

When mixed by pulling the **JET LUX** trigger, ClO₂ chemistry is generated. **JET LUX** contains an amphoteric surfactant for added cleaning performance. ClO₂ eliminates microorganisms by destroying their molecular structures. This means that harmful microbes cannot build resistance to ClO₂.



CREATE A COST-EFFECTIVE AND MORE SUSTAINABLE SPORICIDAL WIPE

Efficacy with the standard wipe used in EN 16615 means **JET LUX** can be paired with any dry wipe. Use a microfibre cloth or a biodegradable dry wipe to create sporicidal wipes. You can stop using pre-wetted plastic wipes.

PROVEN EFFECTIVE IN 1 MINUTE, AGAINST:

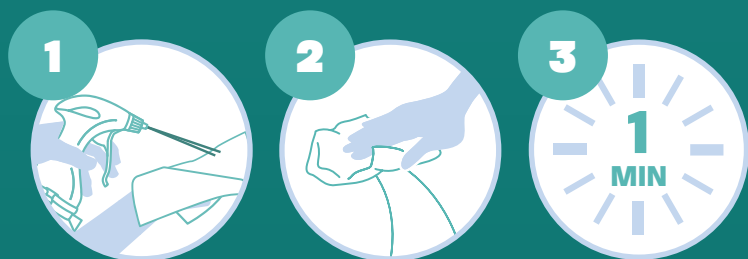
SPORICIDAL	EN 17126
MYCOBACTERICIDAL	EN 14348
VIROCIDAL	EN 14476
YEASTICIDAL/FUNGICIDAL	EN 13624
	EN 16615
BACTERICIDAL	EN 13727
	EN 16615

<i>Bacillus cereus</i>	<i>Enterococcus hirae</i>
<i>Bacillus subtilis</i>	<i>Staphylococcus aureus</i>
<i>Clostridioides difficile</i>	Carbapenem-resistant Enterobacteriaceae (CRE) <i>Klebsiella pneumoniae</i>
Adenovirus Type 5	Extended Spectrum Beta-Lactamase <i>Klebsiella pneumoniae</i> (ESBL)
Murine Norovirus	Methicillin-resistant <i>Staphylococcus aureus</i> (MRSA)
Poliovirus Type 1	
SARS-CoV-2*	Multidrug-resistant <i>Acinetobacter baumannii</i> (MDRAB)
<i>Aspergillus brasiliensis</i>	
<i>Candida albicans</i>	Vancomycin-resistant Enterococci (VRE) <i>Enterococcus faecium</i>
<i>Candida auris</i>	

EASY TO USE APPLY, WIPE & WAIT

Each bottle of **JET LUX** delivers 570 doses of sporicidal chlorine dioxide foam.

Simply apply, wipe and wait!



MEET OTHER MEMBERS OF THE JET FAMILY

For high-touch and high-risk surfaces grab **JET PRO**, the disinfectant that keeps on protecting. An extra ingredient enables the **JET PRO** foam to kill bacteria and enveloped viruses for up to 8 hours after application. Contact your local Sales Representative to find out more.

cache™

**Sporicidal Surface
Disinfection**

+65 6518 9918 - mail-sg@tristel.com
www.thecachecollection.com/sg-en

*A representative sample of Tristel chlorine dioxide chemistry has been tested in accordance with EN 14476:2013+A2:2019, at a concentration of 20 parts per million (ppm). JET LUX has a chlorine dioxide concentration greater than 20ppm at point of use. Use biocides safely. Always read the label and product information before use.

Copyright © Tristel Solutions
Mkt-Bro-2275-1
21/JUL/2023